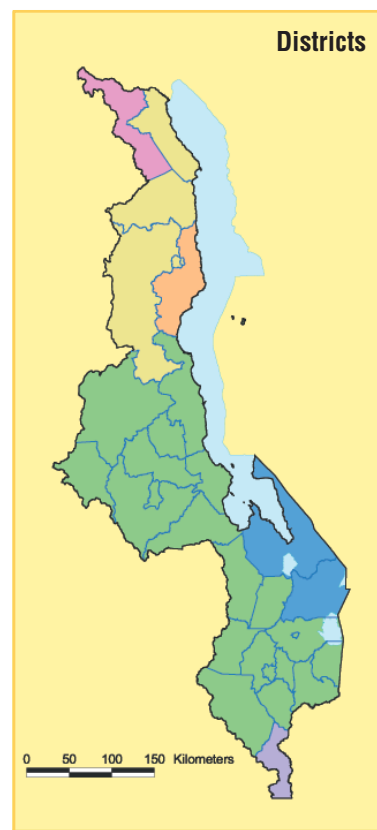
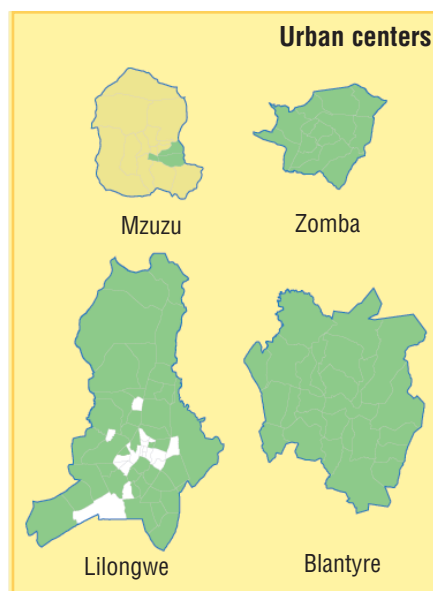
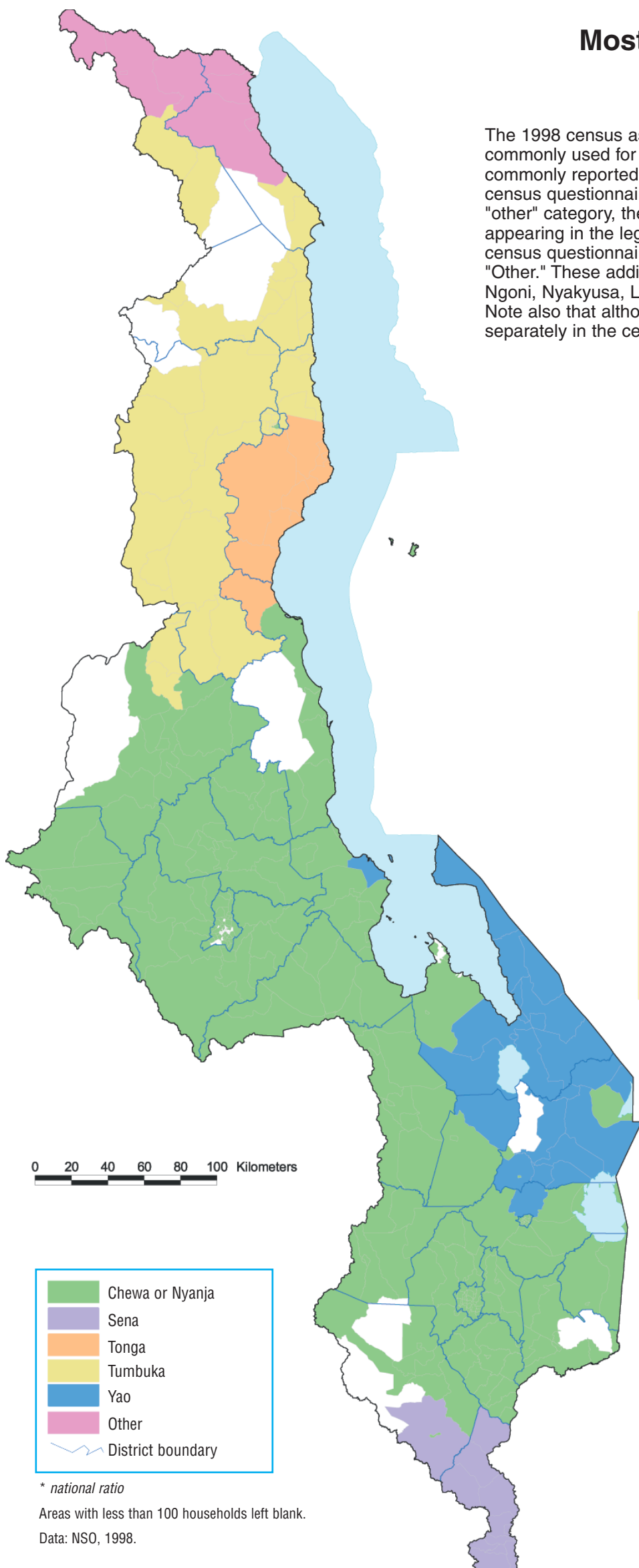


Most common language

Malawi 1998

The 1998 census asked all households what language they most commonly used for communication. These maps show the most commonly reported languages for each area. Note that while the census questionnaire included 14 language categories and an "other" category, these maps focus on the six languages appearing in the legend below. Additional languages from the census questionnaire, when reported, are included under "Other." These additional languages are Lomwe, Nkhonde, Ngoni, Nyakyusa, Lambya, Senga, English, and Portuguese. Note also that although Chewa and Nyanja were reported separately in the census, they are combined in these maps.



- Chewa or Nyanja
- Sena
- Tonga
- Tumbuka
- Yao
- Other
- District boundary

* national ratio

Areas with less than 100 households left blank.

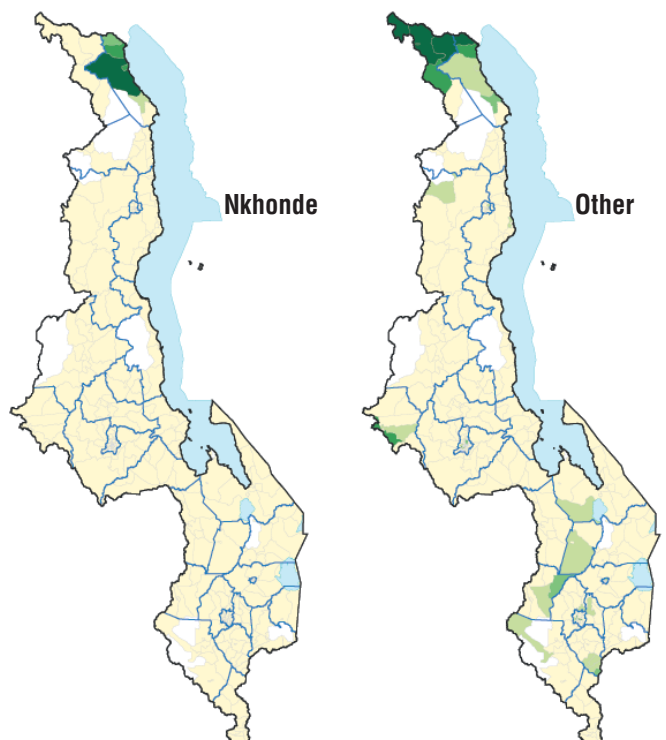
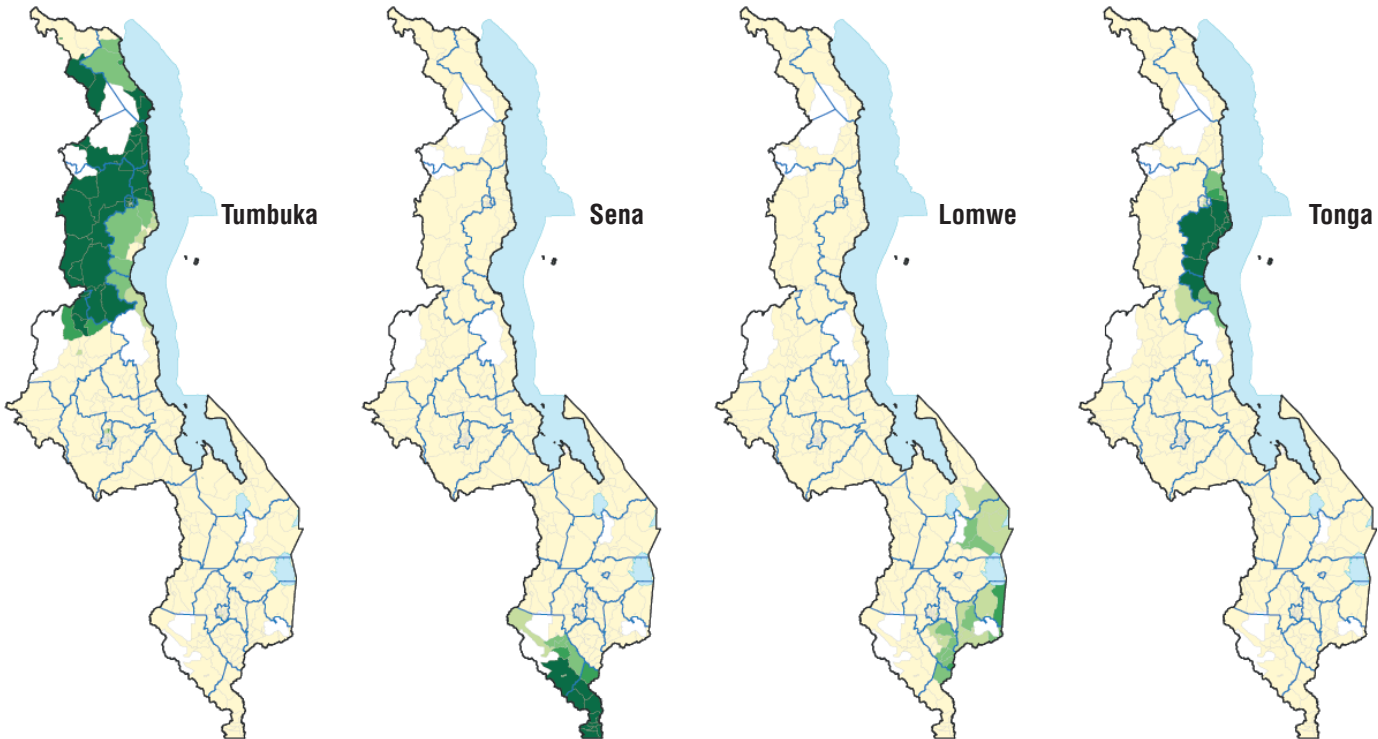
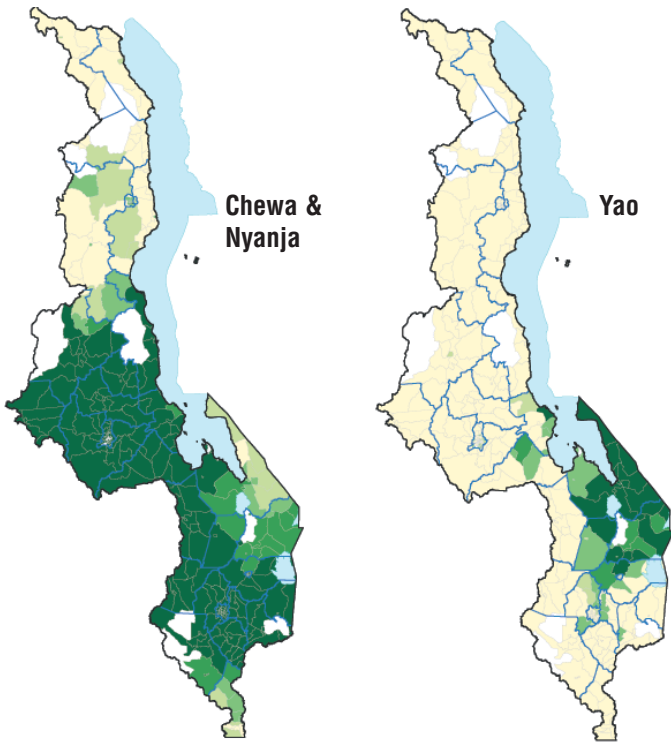
Data: NSO, 1998.

Proportion of population speaking a language

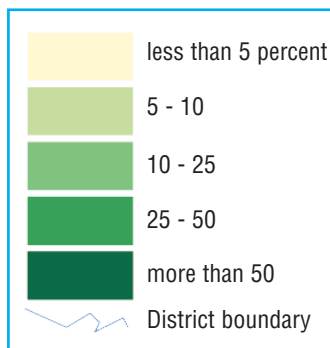
Malawi 1998

These maps show the proportion of the population using a given language for communication within the household. While the census questionnaire included 14 language categories plus an "other" category, only eight of these 14 languages are mapped here. The remaining six languages (Ngoni, Senga, Nyakyusa, Lambya, English, and Portuguese), when reported, are included in the "Other" map. Note also that although Chewa and Nyanja were reported separately in the census, they are combined in these maps. The national breakdown of the proportion of the population using the various languages for communication in the household is shown below.

Chewa & Nyanja:	69.9	Sena:	2.7
Chewa:	57.4	Tonga:	1.7
Nyanja:	12.4	Lomwe:	2.4
Yao:	10.1	Nkhonde:	0.8
Tumbuka:	9.5	Other:	2.9



0 60 120 180 240 300 Kilometers

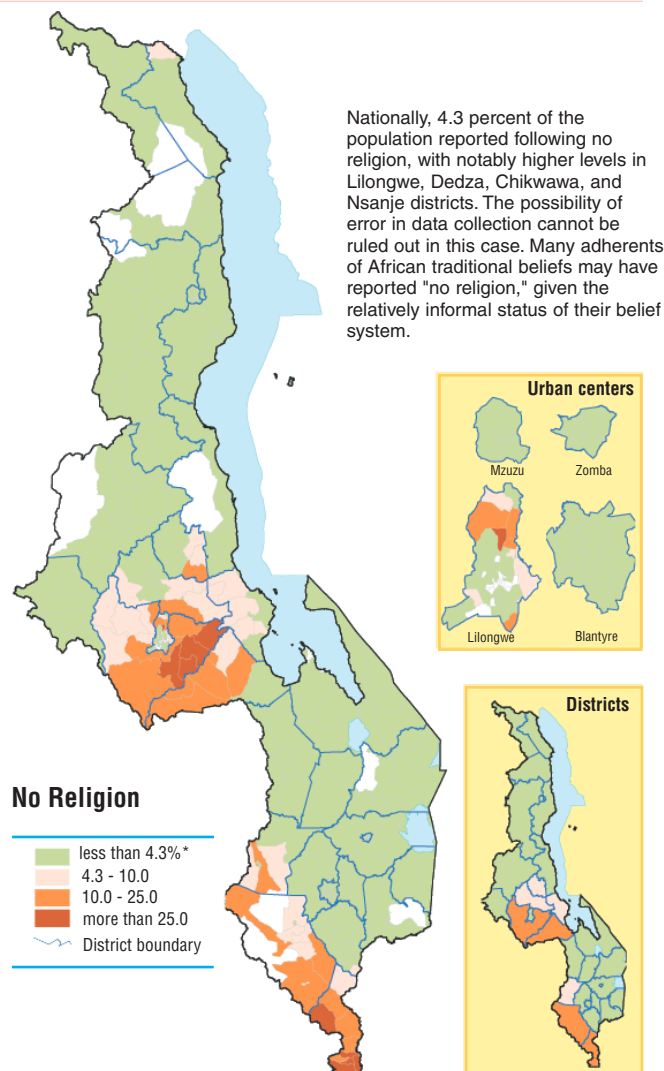
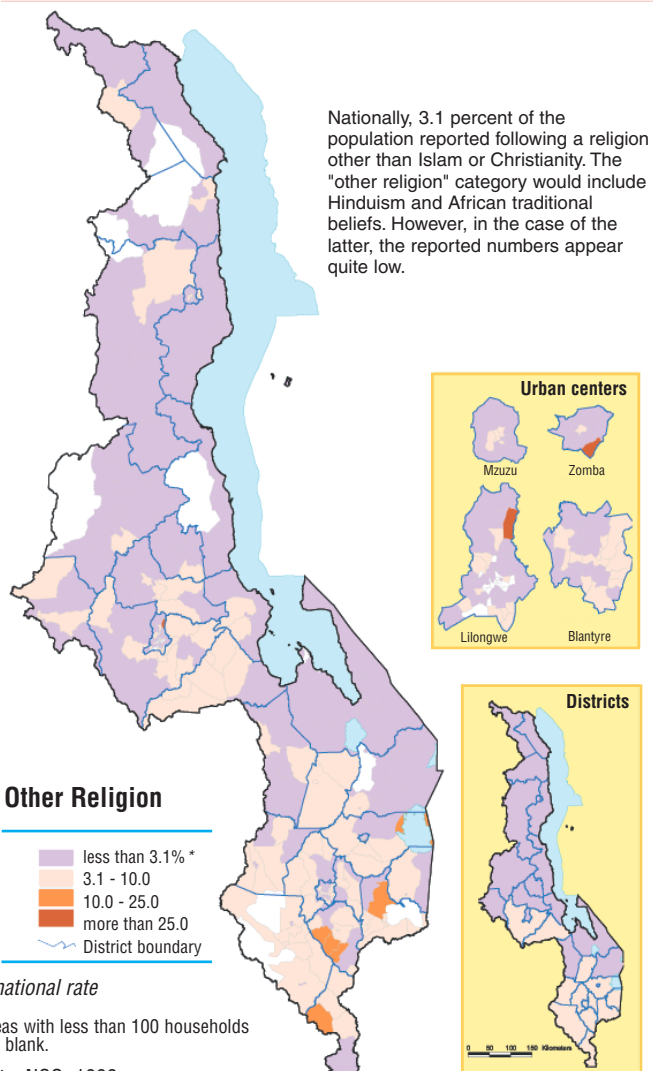
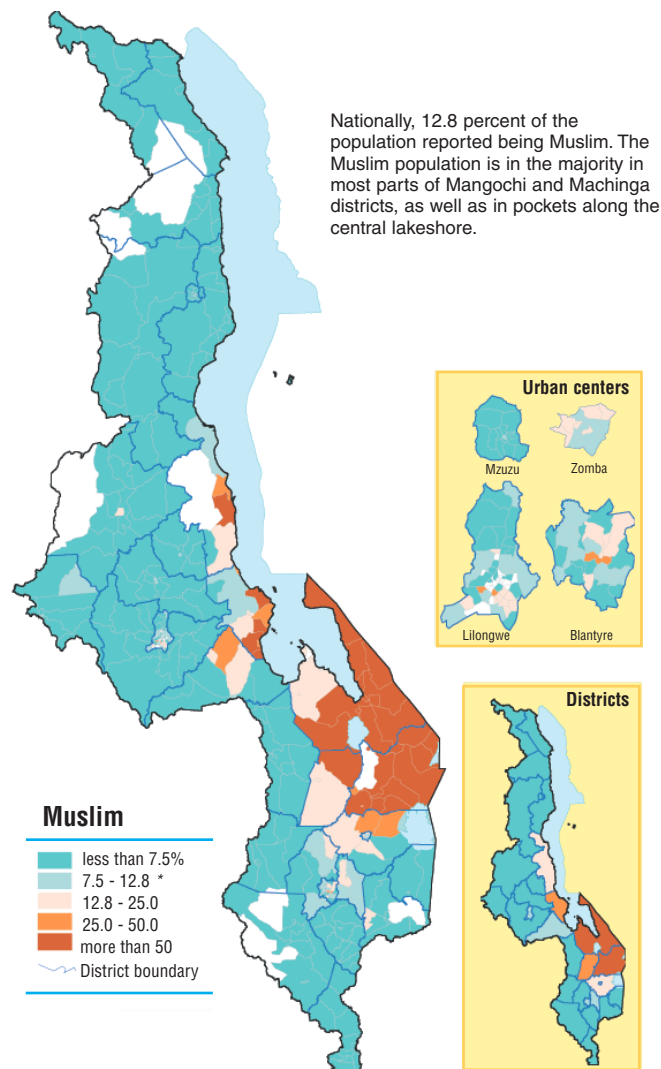
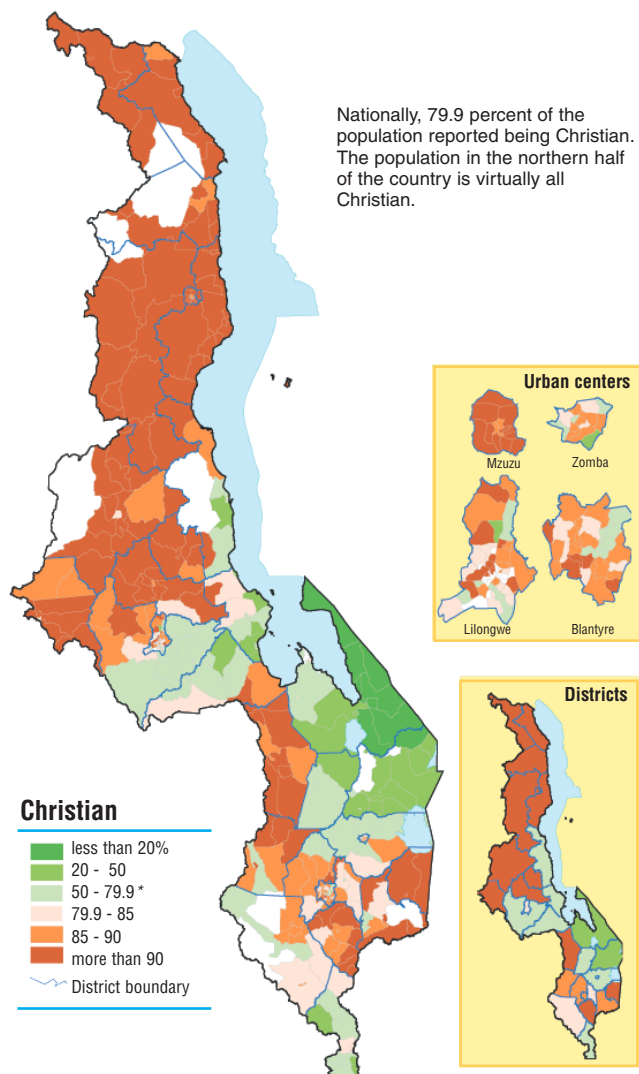


Areas with less than 100 households left blank.

Data: NSO, 1998.

Religion

Percentage of population reporting to be a member of a particular religion
Malawi 1998



* national rate

Areas with less than 100 households left blank.

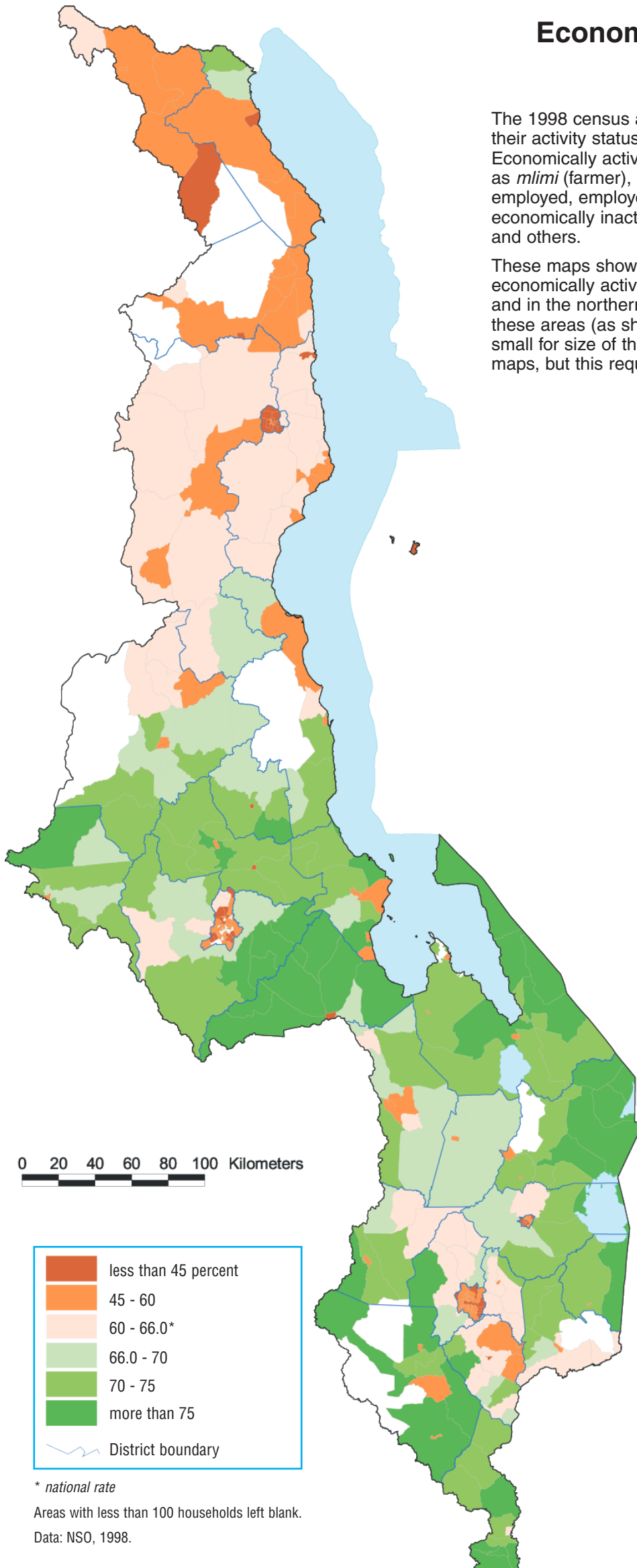
Data: NSO, 1998.

Economically active population

Malawi 1998

The 1998 census asked all individuals 10 years and older what their activity status was over the previous seven days. Economically active individuals are defined as those categorized as *mlimi* (farmer), employee, family-business worker, self-employed, employer, or unemployed. Those classified as economically inactive are non-workers, homeworkers, students, and others.

These maps show the proportion of the population considered economically active. Lower levels are found in the urban areas and in the northern region. The higher proportion of students in these areas (as shown in other maps) may result in the relatively small for size of the economically active population in these maps, but this requires further investigation.

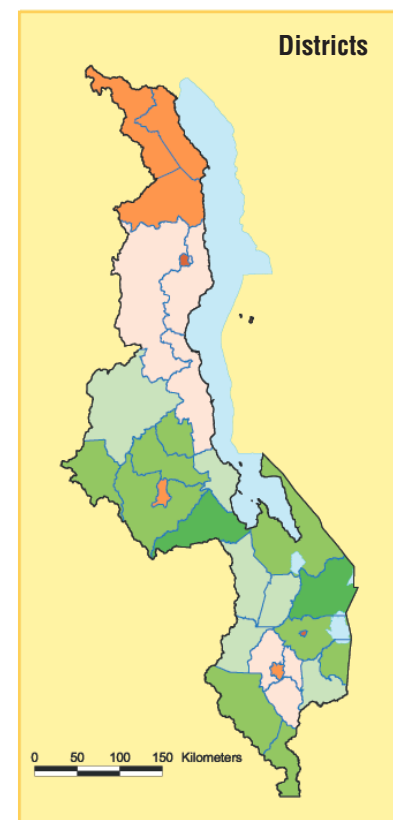
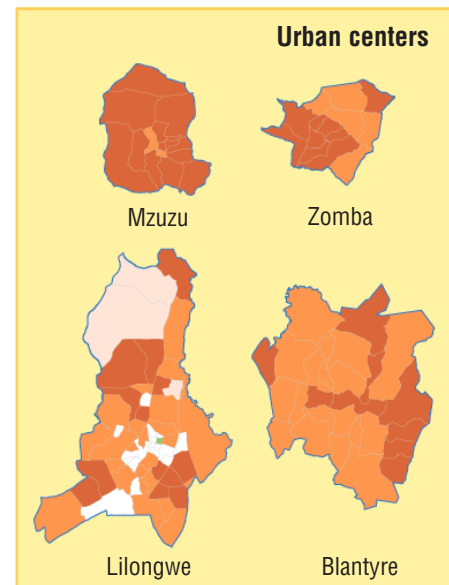


0 20 40 60 80 100 Kilometers

* national rate

Areas with less than 100 households left blank.

Data: NSO, 1998.

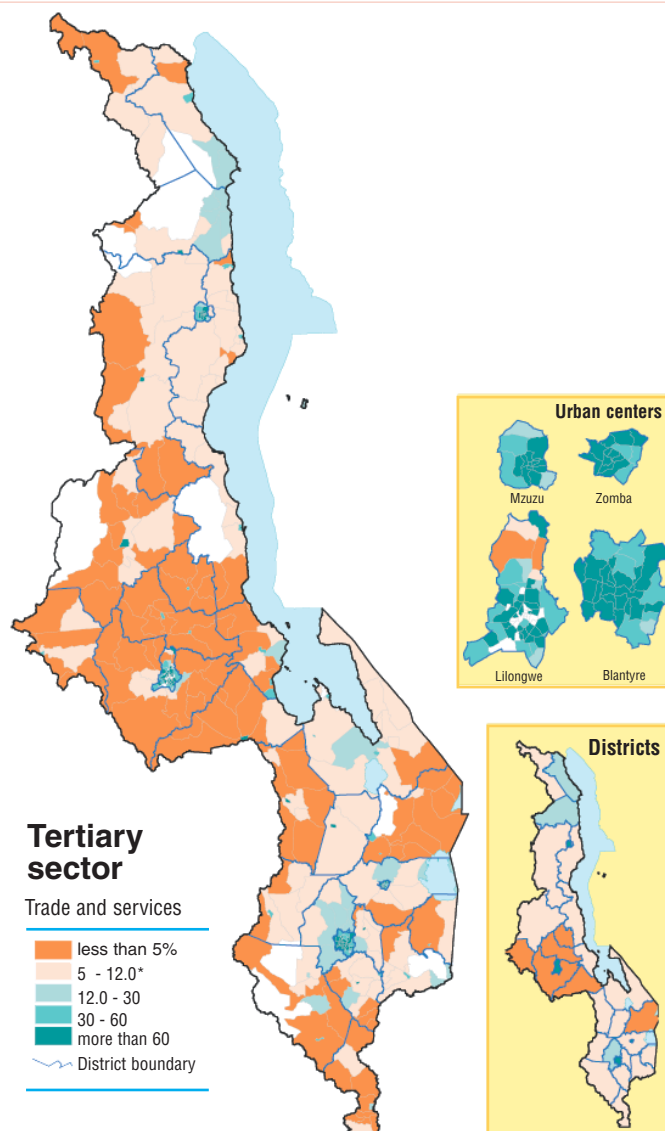
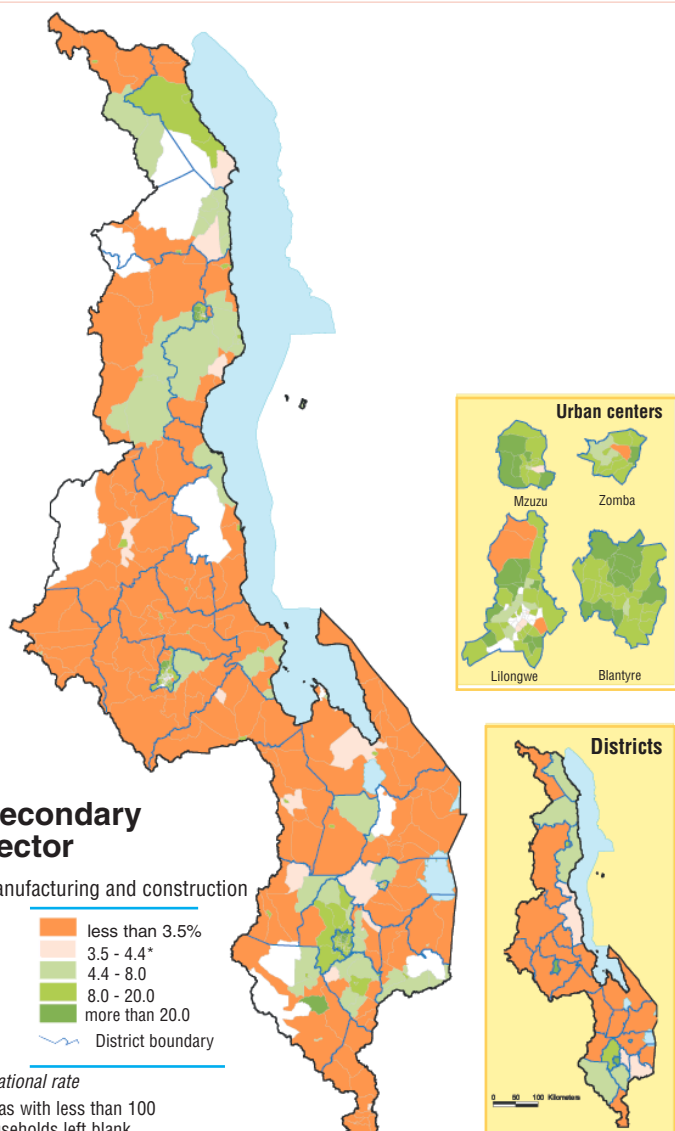
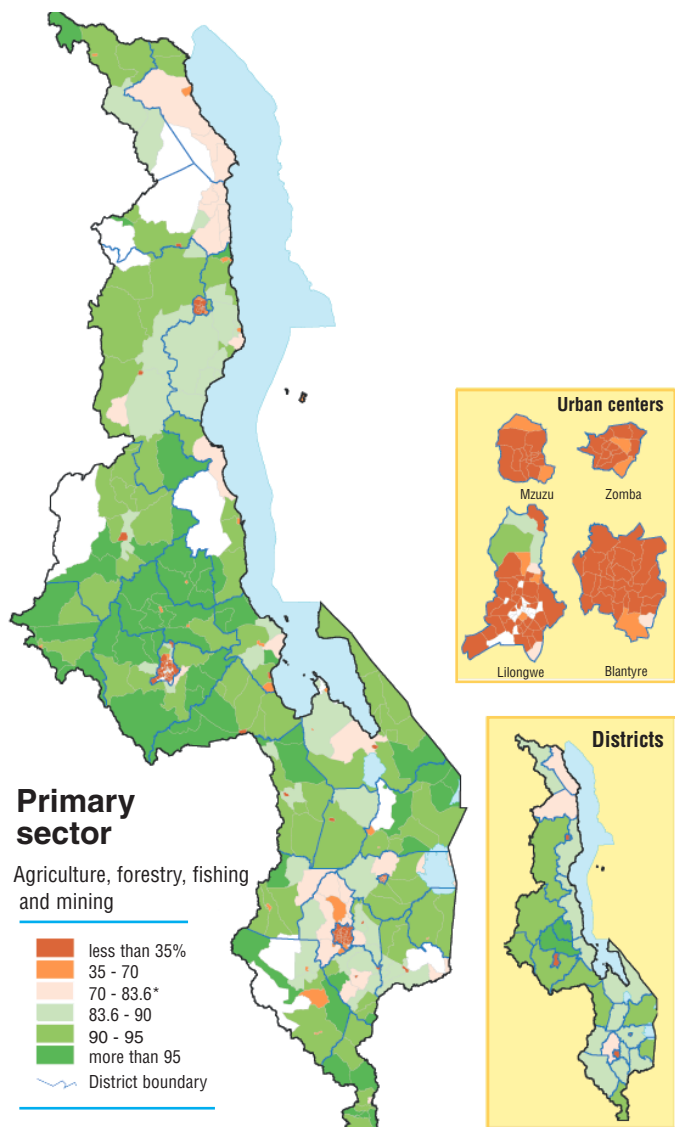


Economic sector of occupation of the economically active

Malawi 1998

The 1998 census asked all individuals 10 years and older who reported being economically active over the previous seven days to specify their occupation - teacher, nurse, driver, farmer, and so on - as well as the industry of their occupation. Here the industry reported is further simplified into three broad sectors, and the proportion of the economically active population working in each is mapped.

The primary economic sector involves the extraction of raw materials from the environment through agriculture, forestry, fishing, and mining; the secondary sector involves processing raw materials and manufacturing; and the tertiary sector involves wholesale and retail trade and the provision of services. As is common with most developing countries, over 80 percent of all workers in Malawi work in the primary sector, most in agriculture. The only areas without a predominance of economic activity in the primary sector are the urban centers and some of the administrative and trading centers in the rural districts. In Malawi the secondary and tertiary sectors are small, involving only 4.4 and 12.0 percent of the economically active population, respectively, concentrated in the four urban centers.



* national rate

Areas with less than 100 households left blank.

Data: NSO, 1998.